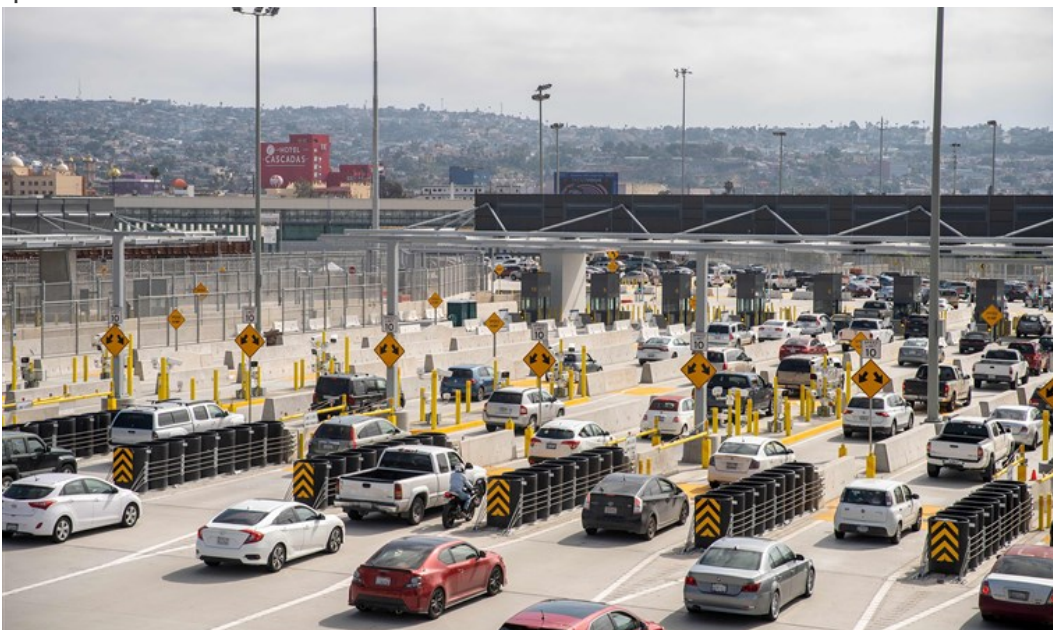


2019 San Ysidro Border Crossing

1. Take I-5 or I-805 South to the U.S. – Mexico border. Follow the International border signs, you will see that the border under the process of being expanded and thus photos online our outdated.



2. Cross the border –Stay to the right as the customs building is right after this first station. Pull off, park and go inside to get your visas approved. Then proceed to follow traffic and stay in the right and middle lanes. Follow the green light and if you hear a siren after the photo is taken of your vehicle you will be going to secondary. Border Patrol will stop the flow of traffic to direct you to the secondary parking where they will ask you a few questions and open up the trunk to inspect the car. Be polite and answer whatever questions are asked.



3. Get into the middle lane under the sign “Via Rapida PTE/Aeropuerto”.



4. Immediately following the first split, there will be a second split, stay to the right.



5. After the second split stay to the right under the La Mesa, Rosarito/Ensenada sign.



6. Continue to stay right and get onto the Via Rapida freeway where you'll be for 10 miles until it ends and turns into Blvd. El Refugio.



7. Once the Via Rapida Ends continue on Blvd. El Refugio and go through the traffic light. Go straight through 2 more stop signs.
8. Go through the next intersection with traffic lights and up the hill. (The intersection has an Oxxo on the left, and a large Swap Meet on the far-right corner.)
9. At the next traffic light – turn left. (There will be a Tecate factory on the far-right corner and a Mama Mia's Pizza on your right.)
10. Follow this road through a traffic light. (There will be a Michoacana - ice cream shop - on your left.) After the traffic light, travel approximately 1/2 mile and make a U-turn at the first left U-turn that is available.
11. Turn right on the third street. (There is a rounded brick building with a small shop on the corner.)
12. Turn right on the fourth street. (It is a wide dirt road with very tall power lines down the middle).
13. The dorms are located on the left-hand side of the street about 100 yards from the turn. The buildings are two-story painted blue with bright yellow trim.